



2024 ANNUAL REPORT

MISSION AND VALUES

MISSION

DH Pace's mission is to enhance the communities we serve by improving the safety, convenience and aesthetics of the buildings where we live, work and play.

VALUES

Respect | Treating everyone we encounter with consideration

Integrity | Honest and ethical behavior in everything we say and do

Service | Building relationships, discovering needs and providing superior solutions

Excellence | Continuous improvement through learning, sharing, teamwork and a common purpose

FULFILLING OUR MISSION

Translating the mission and values into action is the foundation of DH Pace's business. "Living our Values" and "Leading by Example" represent the Company's commitment to consistently making a meaningful difference in the communities we serve. DH Pace strives to deliver meaningful solutions to its customers that meet their needs by incorporating five key elements: Professional Employees, Broad Product Offering, Customized Solutions, Reliable Service and Lifecycle Building Management.

TABLE OF CONTENTS

OUR COMPANY

Mission and Values	2
CEO Address	3
Company Update	4
Company Structure	5
Living our Values	6-7
Customer Testimonials	8-9
Serving our Customers	10-11

OUR OFFERING

Commercial Products	12-14
Residential Products	15

OUR WORK

ROI Never Looked So Good	18
Transit Station Adds Traffic Control	22
Courthouse Adds Vehicle Arm Barriers	23
School District Upgrades Classroom Security	24
New Doors Transform Entertainment Space	25
High Speed Doors Provide Reliability, Energy Savings	26
New Folding Doors Help Firefighters React Faster	27
Major Door Upgrades Required to Meet Standards	28-29
Single-Source Door & Dock Provider	30-33
Custom Doors Lower Risk of Food Spoilage	34
High Speed Doors Increase Productivity & Safety	35
Emergency Service Responds to Natural Disaster	36
Vessel Maintenance Facility Decreases Downtime	37
Customer Standardizes Security Across Locations	38
Behavioral Health System Enhances Security	39

LETTER FROM THE CEO

The year 2024 was marked by significant political events, global unrest, natural disasters, and cultural milestones, re-shaping the world in various ways. The early months of 2025 have continued this theme as the new administration implements its agenda. While there may be uncertainty within the business community from changes such as higher tariffs, the US economy continues to grow and show remarkable resilience. Whether that continues to be the case is a question hotly debated by economists with a wide range of views on the possible outcomes and long-term consequences.

For our part, we remain committed to building an organization that is a trusted partner in working with customers to address their needs as they adapt their businesses to a rapidly changing world. Our mission of enhancing the safety, security, convenience, and aesthetics of the buildings where we all live, work and play has never been more important. Today, we operate from over 60 offices located across the continental United States with additional locations planned. Our National Accounts business, which is active in all 50 states, continues to grow sales and serve customers from coast to coast, while also expanding the range of products and services offered.

GROWING

DH Pace company sales increased by 5% to just under \$1.1 Billion.

HIRING

DH Pace ended 2024 with almost 3,700 employees. Over the past eight years, the Company has created more than 2,000 net new jobs, more than doubling the total number of employees.

INVESTING

In 2024, we completed three acquisitions located in Florida, Ohio, and Kansas. We invested several million dollars in improvements to existing facilities. We are also continuing our multi-year investment in new technologies to facilitate improvement in our business processes to better serve our customers. We expect to complete the implementation of our core technology platform systems, including initial integration with our processes over the next 24 months with further enhancements thereafter.

GIVING

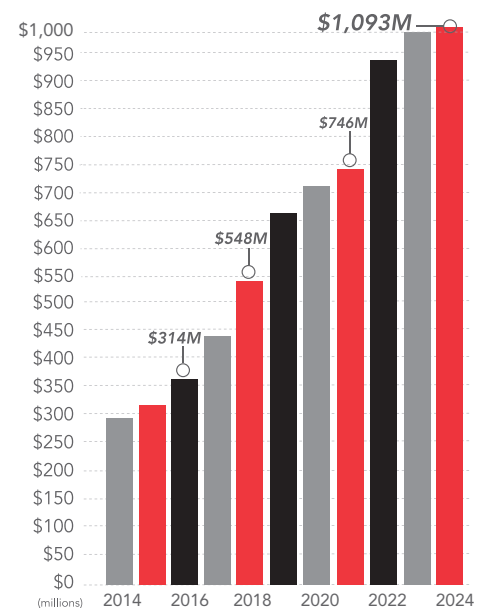
In 2024, we continued our expanded financial support to organizations serving the less fortunate in the communities where we operate offices, with a focus on educational scholarships, food banks, and social service organizations.

We are proud to be a privately held, family-owned business, committed to serving our customers, working hard to be a great place to work, and actively supporting our local communities. We are also thankful for the blessings we have received and remain optimistic that the best days for our Company and our country are still ahead of us.



REX E. NEWCOMER | CHIEF EXECUTIVE OFFICER

TEN YEAR SALES TREND



COMPANY UPDATE

The DH Pace Company, Inc. traces its roots back to the 1920s with the invention of the upward-acting garage door. In 1926, the first location opened as the Overhead Door Company of St. Louis™ under the Overhead Door™ Red Ribbon logo. A year later, Overhead Door Company of Kansas City™ (1927) and a few years later, the Overhead Door Company of Atlanta™ (1935) opened for business. In 1973, the operation of these three entities consolidated and became divisions of DH Pace Company, Inc. In 1995, the Company began selling commercial products and services under the DH Pace brand name in select markets. In 2003, the Systems Integration division was formed to provide access control, video surveillance, intrusion alarm and parking control system products and services. In 2024, the DH Pace Company completed three acquisitions and opened one new greenfield office.

DH Pace Company sales increased in 2024 by more than \$50 million, or 5 percent. The Company also ended the year with 3,698 employees. In 2024, the Company created 299 new jobs.



COMPANY TODAY

3,698
Employees

60+ Markets
Served

98 YEARS IN
OPERATION

299 Added Jobs
in 2024

Family Owned
Privately Held

IN 2024

5%
Sales Growth

\$1.093 Billion
In Sales



\$50 Million
Sales Growth

56,700
Training Hours

1,953 Fleet
Vehicles

DH PACE COMPANY | TODAY



COMPANY STRUCTURE

DH Pace is organized into four main operating groups: Local Market, National Accounts, Entry Door Systems and Compliance Services. Each group is organized to deliver best-in-class solutions to the customers it serves.

Local Market Group

The Local Market Group supports customers with the Company's full range of commercial and residential products and services in over 60 markets throughout the United States. Each location offers installation, maintenance and repair services 24 hours a day, 365 days a year. These offices support homeowners, companies, building owners and tenants in existing buildings and general contractors on new construction and remodeling projects.



National Accounts Group

The National Accounts Group specializes in supporting customers with facilities in multiple markets that need a consistent program for all of their locations - whether they span a region or the entire country. These programs are customized to fit the unique needs of each customer. Offerings include coordination of new construction, remodeling, maintenance and repair activities to provide an integrated plan for maximum efficiency over the entire life cycle of the facility. The National Accounts Group provides its services in all 50 states.



Entry Door Systems Group

The Entry Door Systems Group works with customers in the commercial construction marketplace to provide products and services typically specified in Construction Specification Institute (CSI) divisions 2, 6, 8, 10, 11, 12 and 28. A wide range of additional services are available for pre-construction, construction and post-construction activities.



Compliance Services Group

The Compliance Services Group is a nationwide, one-stop shop for opening-related compliance needs as it pertains to the International Building Code (IBC), NFPA fire code requirements, including all applicable industry standards and best practices. Highly trained, qualified and experienced staff specialize in providing organizations the support they need to improve their compliance programs. Services include inspections, field labeling, training and consulting. Customized programs are available.

LIVING OUR VALUES

At DH Pace, translating our mission and values into action is the cornerstone of the business. “Living our Values” and “Leading by Example” represent the Company’s commitment to consistently making a meaningful difference in the lives of people by:

- Serving Our Communities
- Promoting Environmental Sustainability
- Investing in Our Employees
- Serving Our Customers

SERVING OUR COMMUNITIES

Newcomer Family Foundation

Since 1997, the Company has donated a portion of its profits to the Newcomer Family Foundation to support the Foundation’s charitable activities in the community. The focus of the Foundation is to develop long-term partnerships with charitable organizations with an emphasis on programs that directly affect the lives of those in need. Since its inception, the Foundation has provided millions of dollars in grants to selected local organizations. The Foundation, whose mission supports education, housing, health, and human services, has a longstanding relationship with these organizations.

Through the Company’s Team Impact groups, it has provided additional financial support to organizations helping the less fortunate in the communities we serve. This includes local food banks and social service organizations, with whom long-term partnerships have been established.

LOCAL TEAM IMPACT

Each operating division has its own local Team Impact committee, composed of employees who take the lead in planning events and activities designed to engage and inspire their peers. These teams create opportunities to have fun, build connections, give back to the communities where employees live and work, and prioritize health and wellness initiatives.

In 2024, Team Impact made a difference in the community through a variety of meaningful initiatives, such as collection drives where they gathered food, water, clothing, toys, school supplies, hygiene products, and care packages to support those in need. Team Impact also packed meals, fundraised, and made monetary contributions to charitable organizations. From pulling an airplane to hosting a golf tournament, our teams combined fun with fundraising for incredible causes. During the holiday season, many groups organized angel trees and adopt-a-family programs, spreading joy and positive impact. They also donated blood and volunteered their time.

Throughout the year, numerous events brought employees together to have fun and foster a culture of appreciation. Employees competed against one another in spirit competitions, chili cook-offs and friendly games of Whirlyball and bowling. Team Impact recognized veterans, created a Memorial Day wall, and provided an appreciation station, where notes of

appreciation for coworkers were shared. The year was filled with exciting activities, from breakfasts, BBQs, baseball games, holiday events, company picnics with employees and their families, and the annual technician truck wash!

Team Impact promoted health and wellness by competing in a steps challenge and raising awareness for breast cancer through different activities. Many of the events throughout the year allowed employees to be physically active while giving back or having fun!



PROMOTING ENVIRONMENTAL SUSTAINABILITY

DH Pace believes protecting the environment is a shared responsibility. The Company actively encourages recycling in all its facilities across the country. In addition, the Company provides its customers with a full range of training, compliance programs, products and services designed to better support environmental sustainability in their facilities.



Green Building Best Practices

The Company supports the green building movement by investing in the necessary knowledge, training and certifications to support sustainable construction practices.

Several key programs in this area are:

- Forest Stewardship Council® (FSC®-C011089) to ensure the wood used in products is from sustainable forests
- Green Building Council (USGBC) by participating in the LEED® green building certification system
- Net Zero Energy (NZE) movement by working to reduce the energy consumption of products
- Building Information Modeling (BIM) to improve the overall efficiency of the construction process

2024 Recycling Program

The Company actively encourages recycling at all its facilities to reduce the amount of waste sent to landfills. In addition, DH Pace works closely with suppliers to eliminate unnecessary packaging materials to reduce the overall impact on the environment. In 2024, DH Pace amassed the following recycling totals across all offices.

Scrap Metal | 3,837 Tons

Aluminum, Cardboard, Paper + Plastic | 133 Tons

Printer Cartridges | 362

Tires | 1,655

Vehicle Batteries | 280

Petroleum Waste | 5,221 Gallons

INVESTING IN OUR EMPLOYEES

DH Pace recognizes that highly skilled and motivated employees who consistently deliver exceptional customer experiences are critical to the successful operation of the business. DH Pace places a top priority on recruiting, training and developing career growth opportunities for qualified individuals.



Training and Development

DH Pace's Training and Development team provides training solutions for over 3,600 employees. The Training & Development department utilizes a state-of-the-art Learning Management System (LMS) that provides a variety of training resources including instructor-led training (ILT) sessions, interactive eLearning content, self-paced videos, Quick Reference Guides, Job Aids, handouts, quizzes, and other learning materials. In 2024, the total training hours completed through all delivery methods reached more than 56,700 hours, including over 15,000 instructor-led training (ILT) hours. DH Pace continues to see an annual increase in ILT hours with a 200% increase in hours over 2023.

Employee Benefits and Wellness Program

DH Pace Company provides a comprehensive benefit package that is competitive and affordable to our employees, while offering options that help our employees stay healthy, feel secure and maintain a work/life balance. To help attract and retain employees, the Company offers benefits the first of the month following date of hire. The Company encourages participation in the Company wellness program that, in addition to a wellness incentive, emphasizes the importance of wellness and prevention as effective strategies for employees to feel their best and control healthcare costs. To assist employees with healthcare-related questions, the Company partners with a consumer healthcare navigation company that provides customer service for questions regarding claims, coverage, and cost associated with services.

DH Pace also provides a wide variety of programs that offer financial security to employees such as a 401k plan with access to financial advisors, disability insurance, supplemental life, supplemental critical illness, and supplemental accident insurance plans. To help maintain a work/life balance, a PTO program based on years of service, holidays and two floating holidays are available to employees.

CUSTOMER TESTIMONIALS

“My installation technician was incredible. He did a great job. He went above and beyond to make sure that the keypad worked (it hadn't for years), that the new hardware didn't hang too low for my large SUV, and that nothing blocked the entrance into my home. We were thrilled with the professionalism and the end result.”

- Sheryl from Omaha, NE

ABOUT TECHNICIAN | **JOSUE GUTIERREZ**



“Bryce showed impressive expertise in every aspect of the job. He was thorough and efficient, both in the installation of our new garage door openers, and in his continuous and comprehensive testing of the system. His customer relations skills were also excellent. He patiently answered all of our questions and made sure we understood how to operate all the features of our new system. We are already looking forward to his return in 2025 for our next yearly maintenance!”

- Victor from Colorado Springs, CO

ABOUT TECHNICIAN | **BRYCE DEGREGORY**



ABOUT TECHNICIAN | **JONATHAN DELCAMBRE**
& CUSTOMER SERVICE REP | **DANIELLE MCMILLEN**



“The customer service I received tonight for my emergency repair was the best experience I have had with an on-call service EVER. From the initial call with Danielle to my on-site tech, Jonathan. We

discussed the repair, what I needed, and what my expectations were. He explained in detail the process and what I could expect, best case and worse case. Perfect match! It was a late night, and he smiled the entire time and was efficient and professional. If I could award stars, he definitely deserves a 5-star rating.

I hope that my future repair needs might include him as one of the technicians. Great job!”

- Belynda from Atlanta, GA



“The installers, Cody Brockman and Marshall Bullard, were exceptional representatives of the DH Pace organization. Not only were they very professional and knowledgeable about the product we purchased and installed, but they also were very flexible and willing to go the extra mile in getting the job done. Our site had experienced an elevator failure which we had intended to use to transport the door equipment. We were able to use a smaller elevator for the door panels, tools and materials. But the door frame had to be physically carried up 5 flights of stairs through the fire escape to get it to the install area. Cody and Marshall stepped up and said they had no problem with the physical transport described and wanted to get it up there so the installation could be completed. That sort of forward thinking and customer service is needed more in the industry. DH Pace has two fine technicians in my opinion, and we look forward to them and DH Pace assisting us with future door projects.”

- Brian from Greensboro, NC

ABOUT TECHNICIANS
CODY BROCKMAN & MARSHALL BULLARD



& KEY ACCOUNT REP | **STEPHEN KING**



“Edwin Carrion was amazing! I usually don't do surveys, but he changed my mind right away. He is very, very, very knowledgeable when it comes to his work and on top of that, very professional. He was able to tell me from start to finish what he had done to fix the door. Thank you so much, Edwin, we will be using DH PACE more often because of you!”

- Victor from Orlando, FL

ABOUT TECHNICIAN | **EDWIN CARRION**



“Jonathan Valdez had to do more work on my door than expected. Turns out, it was originally installed incorrectly. He quickly recognized what was wrong with the spring door. With much adjusting needed, Jonathan was able to restore my door to proper working function. I'm so pleased he was my technician. He is friendly and very knowledgeable in his trade. I trust in his workmanship going forward with anything I may need in the future! Cheers to hiring a good crew!”

- Emelia from Albuquerque, NM

ABOUT TECHNICIAN | **JONATHAN VALDEZ**



“Troy is very professional, polite, friendly, and knowledgeable. He is the main reason why I continue to do business with DH Pace. There are plenty of other companies who can do the work. It is the customer service that wins me over. I am very big on customer service, so when you have staff who represent your company in this manner, you should make sure they are appreciated. Staff is the driving force of any successful business.”

- Lalonhi from St. Louis, MO

ABOUT TECHNICIAN | TROY WARE



“We had a last-minute emergency. From the initial phone call to the timeline and execution was amazing. The tech called to check in and update us. Best service from a company in a long time.”

- David from Boston, MA

ABOUT TECHNICIAN | PAUL PAPAVALASSIOU



& SALES SUPPORT | BRITTNEY CREESE



“The technician was super nice. He went over and above what I expected. The VERY BEST customer service I have ever had! I hope if I ever have to call your company again that I can request Mr. Edward Thompson.”

- Nina from Greensboro, NC

ABOUT TECHNICIAN | EDWARD THOMPSON



“Aaron and Kathy are professional and courteous with each interaction. They are well-informed and communicative, keeping me updated on every step of the process. I could not be more happy with my interactions and their work. You have 2 superstars in them, and I greatly appreciate their service. They represent your company well. I look forward to future interactions with this great team.”

- Keith from Seattle, WA

ABOUT TECHNICIAN | AARON STILLIANS



& CUSTOMER SERVICE REP | KATHY BABIN



“Josh got right to the job and got it finished. We visited as I paid him and, WOW, he is so personable and such an asset to your company. He really promoted you and was customer friendly. He is a keeper!”

- Tasker from Little Rock, AR

ABOUT TECHNICIAN | JOSH FREDLUND



ABOUT TECHNICIAN | TIM LEVEILLEE



“My wife and I just recently moved to Nashville from Memphis.

We have had dozens of service technicians of all kinds in our home over the past two months. Without a doubt, Tim Leveillee was the most professional and courteous that we've encountered. Tim is an excellent representative of Overhead Door Company of Nashville™. In addition to complying with our immediate request, he also did a wonderful job of cross-selling your products which we knew nothing about but needed in our home. I give the highest recommendation to Overhead Door Company of Nashville™ and, in particular, Tim.”

- John from Nashville, TN

“Jorge Ortiz was EXTREMELY helpful! He was very timely, courteous, and knowledgeable. People like Jorge are why companies like ours will continue to use King Door Company. He explained everything that he did as far as repairs, and he also gave me some information about PM services. I look forward to working with Jorge again. 10/10 stars.”

- Kaitlin from Dalton, GA

ABOUT TECHNICIAN | JORGE ORTIZ



“The Overhead Door Company of the High Country™ folks helped me during Hurricane Helene to get my garage door functional and took a huge load of worry off my shoulders. I highly recommend them. Punctual, polite and knowledgeable.”

- Petra from Asheville, NC

ABOUT TECHNICIAN | DANIEL PRESSLEY



“Ryan was professional, efficient, conversant, polite, and friendly. We need far more like him in this world. And, when he left, it was with a “Have a blessed day,” which warmed my heart. Great folks, working for an excellent company. I am certain the value of this old home has just increased with my beautiful new garage door/opener! I would recommend this company to any and all who would listen. Thanks, again, for making this a better, more secure home.”

- Patti from Huntsville, AL

ABOUT TECHNICIAN | RYAN KNIGHT



SERVING OUR CUSTOMERS

DH Pace is committed to serving the diverse needs of its customers in all types of facilities. From improving customer convenience and employee productivity to increasing security and safety, you can count on DH Pace to have a complete range of products, systems and services ready to address any need for any type of facility, anywhere in the country.



HEALTHCARE



**INDUSTRIAL AND
MANUFACTURING**



**COMMERCIAL
CONSTRUCTION**



EDUCATION



RETAIL



**DISTRIBUTION
AND LOGISTICS**



**GOVERNMENT AND
MUNICIPALITY**



**SINGLE AND MULTI-
FAMILY RESIDENTIAL**

THE DH PACE DIFFERENCE



**PROFESSIONAL
EMPLOYEES**

Trained, highly skilled
and ready to serve



**BROAD PRODUCT
OFFERING**

For every type of door,
loading dock and
security system in all
types of buildings



**CUSTOMIZED
SOLUTIONS**

Designed to meet
each customer's
specific needs



**RELIABLE
SERVICE**

Nationwide service
when and where
customers need it



**LIFECYCLE BUILDING
MANAGEMENT**

A trusted partner of
construction, renovation,
maintenance and repair



DH Pace provides a complete range of solutions nationwide through more than 60 DH Pace offices and a network of pre-qualified subcontractors.

Alabama

- Huntsville

Arizona

- Flagstaff
- Phoenix
- Tucson

Arkansas

- Fayetteville
- Little Rock

Colorado

- Colorado Springs
- Denver
- Loveland
- Pueblo

Florida

- Jacksonville
- Orlando
- Port St. Lucie
- Tampa

Georgia

- Atlanta
- Athens
- Dalton
- Gainesville

Illinois

- Bloomington
- Chicago

Iowa

- Des Moines

Kansas

- Kansas City
- Lawrence
- Manhattan
- Topeka
- Wichita

Louisiana

- New Orleans
- Shreveport

Massachusetts

- Boston

Missouri

- Columbia
- Joplin
- Kansas City
- Springfield
- St. Joseph
- St. Louis

Nebraska

- Omaha

Nevada

- Las Vegas

New Hampshire

- Salem

New Mexico

- Albuquerque
- Farmington
- Santa Fe

North Carolina

- Asheville
- Charlotte
- Greensboro
- Raleigh

Ohio

- Columbus

Oklahoma

- Oklahoma City
- Tulsa

Rhode Island

- Providence

South Carolina

- Greenville
- Spartanburg

Tennessee

- Nashville

Texas

- Austin
- Ben Wheeler
- Brownsville
- Dallas
- El Paso
- Harlingen
- Houston
- Lubbock
- San Antonio

Washington

- Seattle

Wisconsin

- Milwaukee

PRODUCTS AND SERVICES

Sectional Doors



Aluminum Glass Doors



Knock-Out Doors



Commercial Sectional and Rolling Doors

Commercial sectional and rolling doors play a critical role in increasing employee productivity, customer satisfaction and facility security. Proper product selection, installation and maintenance are necessary for the safe and efficient operation of these large door systems. DH Pace offers a complete range of design, installation, maintenance and repair services for all types of doors to meet these challenging requirements.

Rolling Steel Doors



Counter Shutters



Rolling Fire-Rated Doors



High Speed Parking



High Speed Cleanroom Doors



Cold Storage Doors



Industrial, High Performance and Specialty Doors

Industrial, high performance and specialty doors are typically installed in mission-critical openings where safe and dependable performance is essential. DH Pace offers a complete range of design, installation, maintenance and repair services of these highly specialized door systems.

High Impact Doors



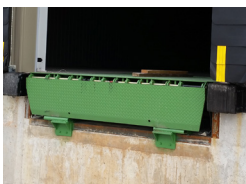
Security Grilles



Hangar Doors



Dock Levelers



Loading Dock Bumpers



Dock Seals and Shelters



Loading Dock Equipment

Dock systems are critical to the efficient operation of an overall material handling system. These systems are designed to increase productivity, facilitate safe operation and provide the appropriate level of security for a wide variety of operating environments. DH Pace offers a complete range of design, installation, maintenance and repair services of these highly specialized dock systems.

Vehicle Restraints



Light Communicators



Bollards and Track Guards



PRODUCTS AND SERVICES

Commercial Entry Door Systems



Finish Hardware



Master Key Systems



Entry Door Systems

In addition to customizing the right entry door system to the application, DH Pace experts help customers account for fire, life safety and accessibility code requirements for entry doors in their facilities. To optimize construction schedules, the Company offers off-site pre-assembly of door hardware and professional pre-painting of entry doors. To help preserve facility security, DH Pace also provides full service lock, key and security solutions for commercial businesses and organizations of all sizes.

Hardware Shop Installation



Custom Painting



On-Site Installation



FireCheck® Program



Fire Door Drop Tests



Planned Maintenance



Maintenance, Service Programs and Automatic Door Inspections

Door systems play a critical role in customer satisfaction, employee productivity and facility security. When these door systems are not well maintained, operations can suffer, profits are lost and it can lead to injury or death. DH Pace helps facility owners and managers increase safety, improve performance, maintain code compliance and reduce costs through a variety of custom maintenance and service programs.

AAADM (American Association of Automatic Door Manufacturers) recommends automatic doors be inspected annually, at minimum, to improve safety for the customers and employees using these doors on a daily basis. DH Pace employs AAADM certified technicians to conduct inspections in accordance with American National Standards Institute (ANSI) A156.10, A156.19, A156.27 and A156.38.

Site Assessments



Inspections



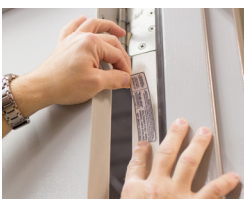
AAADM Certification



Inspections



Field Labeling



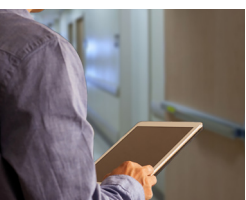
Training



Compliance Services

DH Pace Compliance Services provides door inspection, field labeling, training and code consulting services to assist customers with their compliance programs. Programs are customized to meet the specific requirements of each industry and customer – from healthcare to the food industry to logistics and everywhere in between. DH Pace's staff specializes in providing customers the support necessary to achieve success in meeting their compliance-related needs.

Code Consulting



ANAB Accredited



Association Participation



PRODUCTS AND SERVICES

Automatic Doors

Automating entry doors is an efficient method to facilitate more convenient access in facilities for a wide range of applications including: retail, healthcare, hospitality, transportation and manufacturing. Automatic doors should be inspected routinely and maintained by an AAADM certified inspector to reduce the risk of injury. DH Pace offers a complete range of design, installation, maintenance and repair services for all types of automatic door systems.

Low Energy Doors



Sliding Doors



Revolving Doors



Bi-Folding Doors



ICU Doors



Customized Activation



Physical Security Barriers: High Security Applications

Physical security barriers are a critical component to an overall security plan. In conjunction with electronic security systems and guard service programs, these barriers form a layered security plan. They can be designed for different levels of security such as: crowd control, deterrence, detection and prevention. Hostile vehicle mitigation or vehicle traffic control can also be accomplished through revenue parking systems, access control systems and vehicle barricades such as bollards, wedges and barrier arm gates. DH Pace offers a complete range of design, installation, maintenance and repair services for all types of physical security barriers.

Optical Turnstiles



Turnstiles



Security Portals and Revolvers



Security and Barrier Arm Gates



Barricade Wedges



Hydraulic Bollards



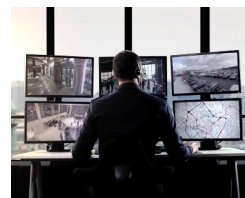
Electronic Security: Access Control and Integrated Security Systems

A well-designed and integrated security system is the cornerstone of an effective security plan. To work properly, these systems must be closely coordinated with the access points and traffic patterns in and around the facility. This makes coordination and integration with entry doors, physical security barriers, automatic doors and vehicle control systems essential. This includes compliance with fire, life safety, accessibility and other relevant code requirements. DH Pace also offers specialized systems including but not limited to: asset tracking, visitor management and ballistic detection.

Electronic Access Control



Video Surveillance and Management



Perimeter and Intrusion Detection



Systems Monitoring and Maintenance



Parking Systems and Gates



Specialized Systems



PRODUCTS AND SERVICES

Residential Designer Garage Doors

Regardless of aesthetic preference, DH Pace has garage doors for everyone. With upscale designs and specialty features, homeowners express their sense of style and maximize curb appeal with a designer garage door from DH Pace.

Full-View Glass



Modern Aluminum



Custom Wood Designs



Wood Carriage House



Insulated Carriage House



Contemporary Design



Residential Garage Door Products

As the largest moving object in a home, a garage door can be a huge convenience for daily life. For many people, the garage door is the main point of entry for their home and it enhances the curb appeal, energy efficiency and overall security. Residential experts at DH Pace work with homeowners, builders, architects and property managers to provide the appropriate residential products and services for any application in single-family and multi-family homes.

Traditional Steel



Traditional Wood and Wood-Grain



Premium Insulated Steel



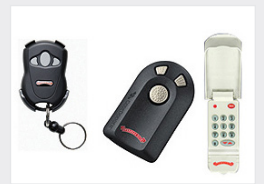
Fiberglass



Operators



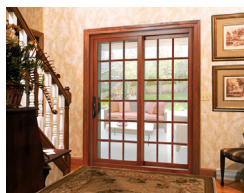
Customized Controls



Residential Home Solutions

In addition to garage doors, DH Pace offers an expanded variety of home improvement related products. Enhance your home with an ENERGY STAR-rated entry door or create a physical barrier on your property with a residential gate. You can even conveniently monitor your garage door with an upgraded Wi-Fi capable garage door operator and smartphone app.

Entry, Patio and Sliding Doors



Residential Gates



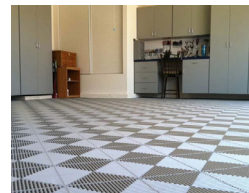
Home Automation



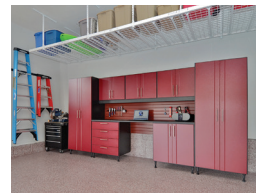
Garage Door Screens



Garage Flooring



Garage Storage Systems





The Genuine. The Original.



OverheadDoorKansasCity.com

Garage Doors
Entry Doors
Automatic Doors

816-221-00

Dock Equipment
Access Control
24-Hour Service

C755



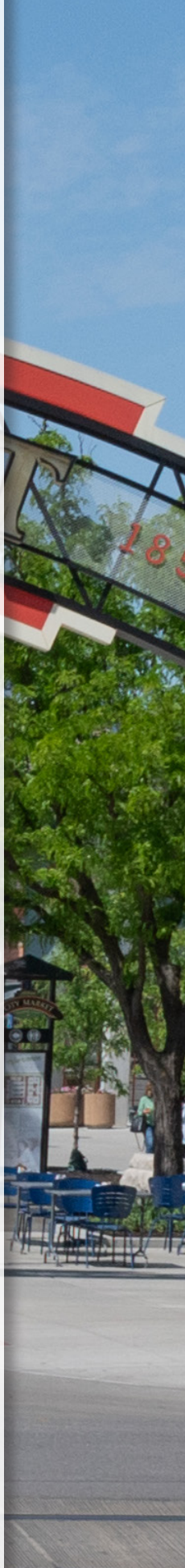


The Genuine. The Original.
Overhead Door Company of Kansas City™
Operated By DH Pate Company, Inc.
USDOT 347533



20

RESIDENTIAL CASE STUDIES

24



CASE STUDIES

ROI NEVER LOOKED SO GOOD

Residential | Garage Doors and Entry Doors

The DH Pace residential division is redefining curb appeal across America. Homeowners have more choices than ever with today's wide variety of garage door styles and advanced insulation options.

DH Pace doesn't just stock American-made garage and entry doors—they also bring custom designs to life. Their skilled designers and mill workers collaborate with homeowners to create garage doors tailored to their unique vision, delivering personalized style and quality.

Currently, there is no higher return on investment with residential remodel projects than a new garage door. According to the Cost Vs. Value report published by *The Journal of Light Construction*, a garage door replacement tops the list with a whopping 193.3% return. Second on the list, at 188%, front entry door replacement, ahead of 21 other home improvement projects.

Homeowners can also explore their range of front entry doors, smart openers, garage storage solutions, floor coatings, and patio and screen doors. With the guidance of a DH Pace expert consultant, choosing the perfect materials and designs to fit your needs and budget has never been easier.





A new garage door from DH Pace enhances curb appeal and is a sound financial investment.





20

COMMERCIAL CASE STUDIES

24



CASE STUDIES

PUBLIC FACILITY ADDS PEDESTRIAN TRAFFIC CONTROL

Government & Municipality

PROBLEM

An international terminal at a busy transportation station needed to better control pedestrian crowds and traffic flow but had limited space available to do so.

SOLUTION

DH Pace and the Company's Special Projects team got to work designing a custom solution to solve the station's concerns. The Company installed 5 heavy-duty waist-high turnstiles built to withstand the frequent use of public transit facilities while maintaining a clean aesthetic. DH Pace also installed 2 ADA-compliant swing gates with matching aesthetic and durability to the turnstiles. The turnstiles and swing gates feature tamper-proof designs and are low maintenance, making them ideal for the busy transportation station. Both styles could integrate with access control systems for an additional level of security if the transportation facility chooses to do so. DH Pace worked closely with the customer to fit the turnstiles and gates into the available space without demolition of the walls.

In addition, DH Pace worked with several other trades on the project. The Company coordinated with the electrical contractor for the high voltage line. The DH Pace Special Projects team coordinated the locations for the cable runs and card reader mounting locations.

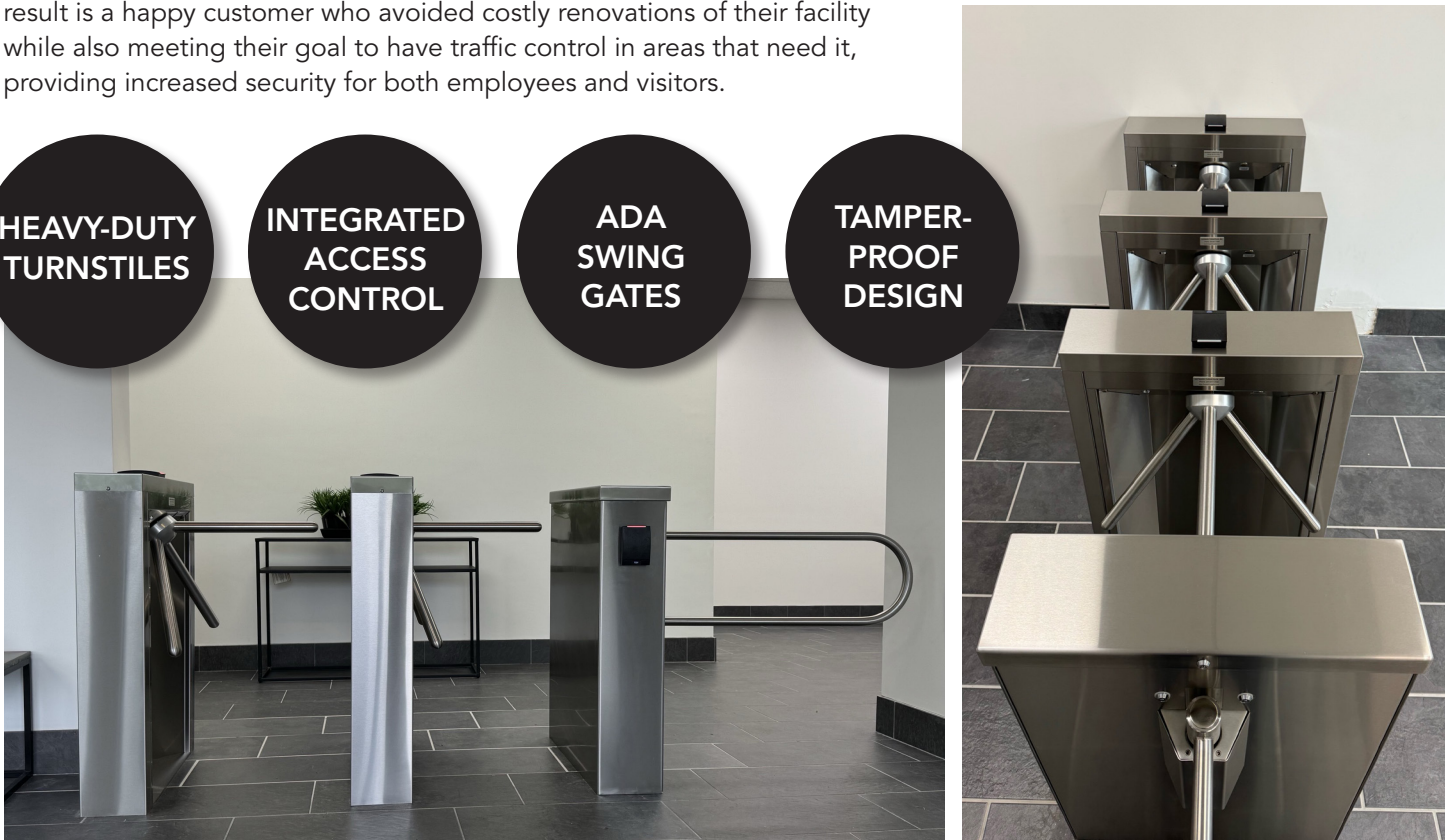
All trades had a sequence of their scope of work. DH Pace coordinated resources and assisted the customer with scheduling to ensure a successful project that was completed on time. The result is a happy customer who avoided costly renovations of their facility while also meeting their goal to have traffic control in areas that need it, providing increased security for both employees and visitors.

HEAVY-DUTY
TURNSTILES

INTEGRATED
ACCESS
CONTROL

ADA
SWING
GATES

TAMPER-
PROOF
DESIGN



COURTHOUSE ADDS SECURITY WITH VEHICLE ARM BARRIERS

Government & Municipality

PROBLEM

A courthouse had several vehicle entrances with rolling steel doors that required security to restrict vehicular traffic when the doors were in the open position.

SOLUTION

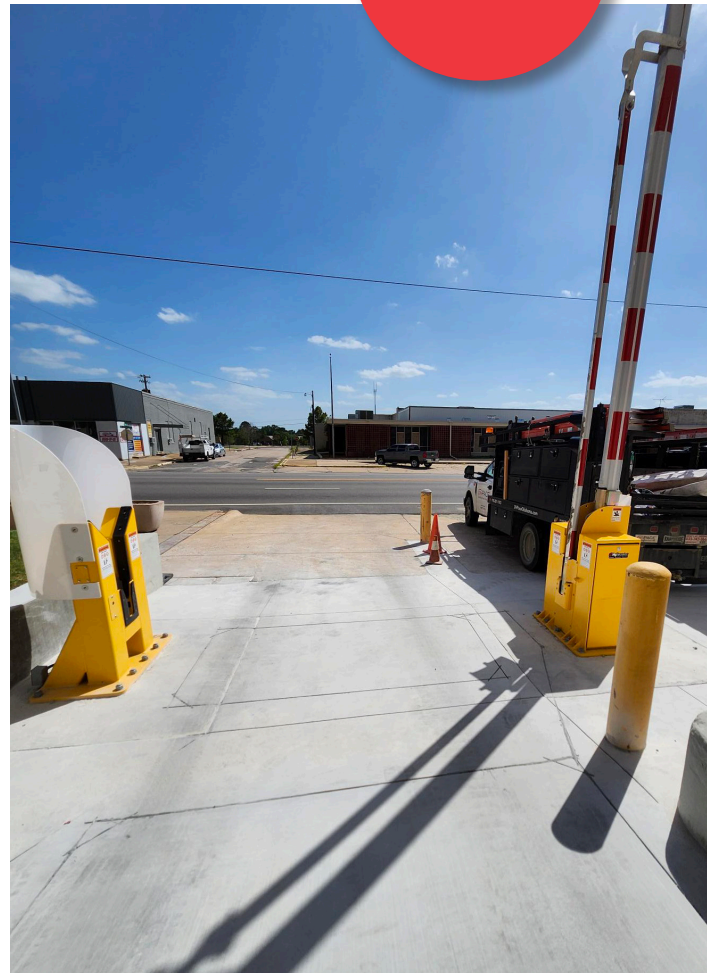
DH Pace presented a solution that kept the existing rolling steel doors in place and added a significant level of protection from unwanted vehicle traffic. The Company installed vehicle arm barriers capable of stopping a truck approximately one meter after hitting the barrier before each of the rolling steel doors. The barriers are built for high cycle use so they can be raised and lowered at a near-constant rate without a slowdown. They rise in 8 seconds or less so traffic to the courthouse can continue to flow smoothly. The barriers feature a dual-arm height design to stop unauthorized passenger vehicles and larger trucks. LED lights on the barriers ensure they are clearly visible at all times of day.

The result is increased security and efficiency for the courthouse as well as its staff and visitors, and peace of mind for the jurisdiction in charge of the courthouse.

HIGH
SECURITY
GATE

FAST
OPERATION

CRASH-RATED
BARRIERS



SCHOOL DISTRICT UPGRADES CLASSROOM SECURITY

Education

PROBLEM

A K-12 school system wanted to increase door security at all of their locations while also staying within their budget.

SOLUTION

DH Pace presented an economical access control solution for the classroom doors as well as safe and code compliant locking systems. Since all of the locking hardware was being replaced with a single system, DH Pace also re-keyed the entire school district. Intelligent locksets with new hardware and a master key system were installed in more than 2,030 openings. These intelligent locks provide a full audit trail, lockdown at the classroom door, and a keyless solution for teachers.

DH Pace completed the entire project over the summer months so that classes weren't impacted by the work. Following the installation, the school district decided to upgrade their surveillance cameras inside and outside as well and again called on DH Pace to perform the work.

By providing a solution for every opening in the district, DH Pace not only earned the initial phase of this project, but subsequent projects with the district as well. The school district now has standardized locking hardware, a standardized patented key system, as well as an intelligent lock on every door that has children in the room to provide increased security and peace of mind for students, staff, and visitors.

UPGRADED
KEY
SYSTEM

2,030+
OPENINGS

INTELLIGENT
LOCK
SYSTEM



NEW DOORS TRANSFORM ENTERTAINMENT SPACE

Entertainment



PROBLEM

The entry doors at an education and research center were nearing the end of their life, resulting in increasing maintenance costs, downtime, and customer inconvenience. Past repairs left some doors looking different, creating an aesthetic problem.

SOLUTION

DH Pace replaced all 8 doors and hardware at the main entrance with new swinging aluminum and glass doors and operators. Rather than having 8 separate door operator headers, the new operators were installed with seamless headers for a sleek, clean appearance. The 2 doors on each end are automatic with ADA-compliant operators and the middle 4 doors are manual operation. Another 8 doors at a second entrance to the facility, including some internal openings throughout the facility, were also replaced.

The doors are also tied into the facility's smoke evacuation system through the automatic operators for increased safety of visitors, staff, and the wildlife residents. DH Pace's local office had been servicing the facility's doors for more than 20 years. That strong positive relationship formed between the center and DH Pace made the Company a natural choice to perform the work.

The result is a happy long-time customer with increased safety at their facility and an improved experience for visitors and staff each time they walk through the doors.



HIGH SPEED DOORS PROVIDE RELIABILITY AND ENERGY SAVINGS

Industrial & Manufacturing

PROBLEM

A food manufacturer had two sliding freezer doors on the cooler wall leading into the freezer. The doors were damaged and experienced frequent breakdowns. They were not sealing well, which allowed air from the freezer side to escape, which caused ice build-up on the doors.

SOLUTION

DH Pace presented a solution of specialized high speed doors to provide the insulation the facility required and the reliability the manufacturer wanted. DH Pace removed the sliding freezer doors and installed (2) 10-foot-wide by 10-foot-tall insulated high speed doors in their place. The new doors were constructed of thermal, puncture-resistant, moisture-proof fabric with a vapor barrier. They had an R-value of 17 and featured seals on all sides as well as the ability to self-repair if impacted to reduce maintenance and downtime.

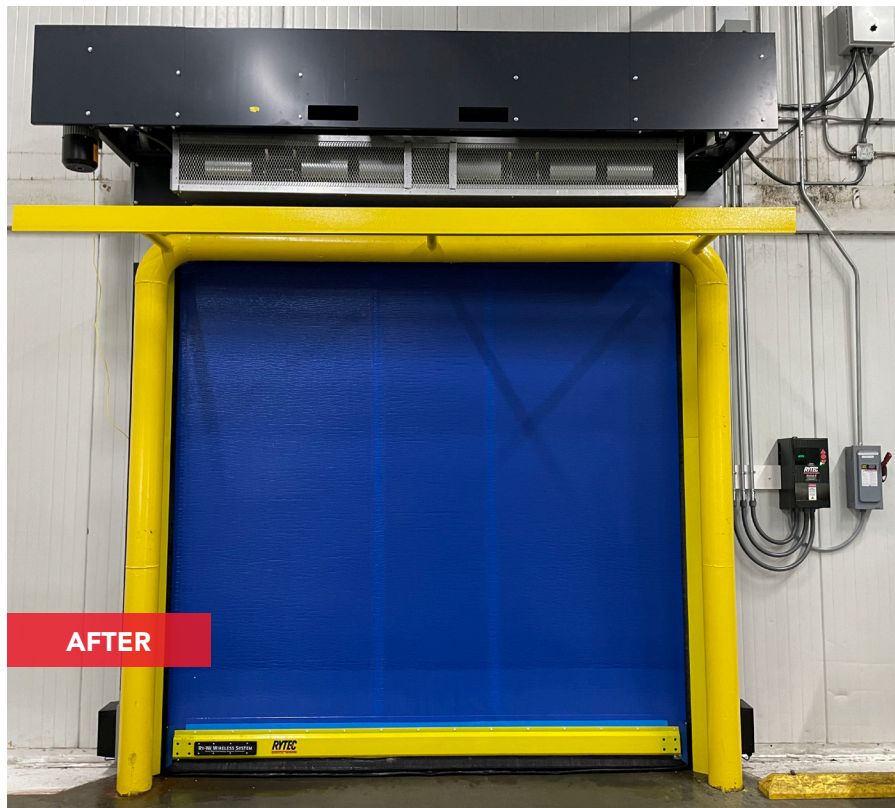
The doors have an average opening speed of 120" per second and closing speed of up to 60" per second to ensure traffic flows freely and time open for cold air to escape the freezer is minimized. Safety lights on the left and right sides of the door on each side of the opening clearly warn drivers and pedestrians when the door is about to close.

The result is a customer who is now able to operate their facility more efficiently and safely without worrying about lost product from improper temperatures or delayed production due to downtime of their doors.

120" PER
SECOND
OPENING

60" PER
SECOND
CLOSING

HIGH
INSULATION
RATING



NEW FOLDING DOORS HELP FIREFIGHTERS REACT FASTER TO ALARMS

Government & Municipality



DOORS UP
TO 14' X 14'

24" PER
SECOND
OPENING

WITHSTAND
200+ MPH
WINDS

PROBLEM

A city fire department was expanding and needed doors to outfit their newest fire station.

SOLUTION

DH Pace proposed a mix of door types to best meet the needs of the station. For the doors entering the station, DH Pace installed (5) 14-foot-wide by 14-foot-tall insulated rolling steel service doors. These doors provide security for vehicles to safely enter the station in non-emergency situations. For the exit doors, the Company suggested a different type of door to facilitate faster operation when the vehicles need to exit quickly to address emergencies.

DH Pace installed (4) 14-foot-wide by 14-foot-tall four-fold doors and (1) 14-foot-wide by 12-foot-tall four-fold door on the bay openings at the front of the station. The four-fold doors are high speed to ensure first responders can exit the facility quickly when dispatched to an emergency. These high performance doors have an average opening speed of 24" per second.

The four-fold doors can be opened and closed manually, so they won't hinder a life safety response while waiting for repairs or during a power outage. The doors meet 120 psf wind pressure and also feature impact-rated glass to withstand Category 5 hurricane and tornado conditions, making them ideal for all areas of the country.

The fire station is now up and running, serving the community with doors that meet the needs of emergency responders and the county without sacrificing operation, speed or wind resistance. The city is so pleased with the door arrangement at the new station that they are expanding this door approach to other fire stations in the area.



MAJOR DOOR UPGRADES REQUIRED FOR FACILITY TO MEET INDUSTRY STANDARDS

Industrial & Manufacturing

PROBLEM

A manufacturer was cited during a regulatory inspection that their doors and operating practices permitted pests to enter their facility. During spring and summer, the facility would leave their dock doors open, which allowed the pests to enter. To ensure compliance before their next survey, every opening needed to be sealed and updated per American Institute of Baking (AIB) requirements. AIB inspections check for adherence to guidelines designed to keep products free from outside pollutants, bugs, etc. They can also provide insight into potential issues that could be found during a Food and Drug Administration (FDA) inspection, causing greater urgency for the manufacturer to rectify the pest situation quickly.

SOLUTION

DH Pace provided a single-source solution to supply the doors and dock equipment for each dock position as well as a multi-step approach to keep pests out of their facility. The Company replaced the facility's existing dock doors with rolling steel doors with vision slats to allow natural light into the facility when keeping the doors closed. Low-profile air curtains were installed above each dock opening to create an additional barrier to entry for pests during loading and unloading when the doors are open and the dock levelers are in use.

As a third line of defense, DH Pace installed automatic bug screens in the rolling steel door jambs at the dock openings so the rolling steel doors can be left open to allow more airflow without allowing pests to enter.

To fit the rolling steel doors, air curtains, and bug screens on each opening, DH Pace designed a custom configuration while still creating an effective floor seal. Straight brush was added to the headers to seal the openings. To preserve energy, the air curtains shut down automatically when the bug screens are down.

DH Pace also outfitted each dock position with updated dock equipment including automatic, non-impact truck restraints, dock seals, adjustable LED dock lights, and weather guards to prevent precipitation from rolling off the top of the trailer and onto the manufacturer's materials or finished products. Digital master control panels interlock the doors, levelers, restraints, and air curtains together to operate in order at each opening. This not only increases energy efficiency by turning off the air curtains when the bug screens or doors are closed, it also increases safety by ensuring trucks don't pull away from the dock early.

Finally, DH Pace installed a custom 6-foot-wide by 8-foot-tall hollow metal double door with upgraded hardware at the facility's pedestrian entrance. The Company also reused the manufacturer's existing maglocks and security systems to avoid unnecessary expense. To combat pests entering through this doorway as people enter and exit, an air curtain was installed above each door leaf.

The result is a more secure and energy-efficient facility for the manufacturer and a safer, more comfortable environment for employees working around the dock. The manufacturer passed their next AIB inspection without issues. They are very pleased with the new doors and equipment and have since approved additional projects with DH Pace.

PASSED AIB
INSPECTION

INCREASED
ENERGY
EFFICIENCY

CUSTOM
INSTALLATION

MULTI-LEVEL
INSECT
PREVENTION

DH PACE IS SINGLE-SOURCE DOOR & DOCK PROVIDER FOR HEALTHCARE SYSTEM

Healthcare

PROBLEM

A regional healthcare system built a new hospital and medical office building to replace their aging facility in a rural area. The new 100,000 sq. ft. building had space for physician offices, outpatient services, and inpatient care, as well as diagnostic and testing facilities, primary care offices, pharmacy, chapel, and more. The healthcare system and their general contractor needed to outfit all of the openings in the facility.

SOLUTION

DH Pace presented a single-source provider solution for all the doors and docks in the new facility. As a “one-stop shop” for the general contractor, DH Pace installed various types of doors, windows, dock equipment, and Division 10 products throughout the facility.

For the hospital’s 3 entrances, DH Pace installed a set of automatic sliding doors at each. At the facility’s loading dock, the Company installed a rolling steel door, dock leveler, and surface-mount dock lift.

Throughout the new facility, the Company installed over 300 wood doors ranging from birch doors on offices, patient rooms, hallways, and closets to solid red oak doors on the chapel. Fire doors rated up to 90 minutes were installed in the hallways. An additional (50) 18-gauge hollow metal doors were installed in stairways and exterior emergency exits. ADA operators were installed on select doors for restrooms, hallways, and patient rooms. Exit devices on hallway and stairwell doors ensured egress would not be impeded in the event of an emergency. In all, DH Pace installed over 350 swinging doors and frames.

Manual sliding barn doors were installed at 20 offices, and the 9 intensive care patient rooms were outfitted with manual sliding ICU doors. Transaction windows were

installed at select nurses’ stations and physician offices. Access control alarm lock keypads were installed on certain offices and closets to provide keyless entry while preventing unauthorized access.

Specialty items included safety-enhancing products, such as lead-lined doors, frames, and windows for use in radiology and similar departments, ligature-resistant hardware to lower the risk of patient self-harm, ligature-resistant shutters installed in 2 emergency rooms, and a shatter-resistant, tamper-proof pass-through window at the pharmacy to protect employees and lower the risk of stolen medications.

Finally, DH Pace outfitted the hospital with a range of Division 10 products including restroom partitions, coat hooks, grab bars, shower curtains and rods, shower seats, baby changing stations, and fire extinguisher cabinets.

The Company involved nearly every department of the local office in the project. The result is a new hospital completed on schedule and prepared to serve the public’s healthcare needs while keeping patients and staff safe and secure.

PRODUCTS INSTALLED

- Entry Doors, Hardware, and Locksets
- Automatic Doors
- Rolling Steel Doors
- Specialty Doors
- Loading Dock Equipment
- Ligature-Resistant Doors and Hardware
- Access Control Keypads
- Division 10 Products

SINGLE-SOURCE PROVIDER

350+ SWINGING DOORS

20+ PRODUCT TYPES

LEAD-LINED DOORS

LIGATURE-RESISTANT HARDWARE







CUSTOM DOORS LOWER LOSS RISK FOR FOOD MANUFACTURER

Industrial & Manufacturing



PROBLEM

A food manufacturer was concerned with the doors to their food storage areas. The rolling doors might drip condensation, creating a safety hazard on the floor. In addition, excess moisture increased the risks of bacteria growth and spoilage.

SOLUTION

DH Pace created a custom solution to meet the specific needs of the manufacturer's process and the strict health, safety, and compliance requirements of a food manufacturing facility. The existing rolling doors were removed, and custom-designed, oversized swinging food-grade doors were installed. At each storage room, a single one-piece swinging door was installed in the existing 10-foot-wide by 19-foot-tall opening. The result is a safer environment for employees in the facility and a reduced risk of food spoilage or inspection violations for the manufacturer.

CUSTOM
FOOD-GRADE
DOORS

ONE-PIECE
PANEL
CONSTRUCTION

10' X 19'
DOORS

HEALTH AND
SAFETY
COMPLIANT

HIGH SPEED DOORS INCREASE PRODUCTIVITY AND SAFETY

Industrial & Manufacturing



55" PER
SECOND
OPENING

WITHSTAND
90+ MPH
WINDS

20' X 14'
DOORS

PROBLEM

A steel fabricator was experiencing significant tempered air loss due to keeping a large door open during business hours. Due to frequent traffic through the opening and needing to keep the rolling steel door open while trucks backed into the building to unload at the interior dock, the fabricator was unhappy with the daily energy loss. Elsewhere in the facility, rolling steel doors were over 2 decades old and near the end of their lifespan.

SOLUTION

DH Pace proposed a solution that would allow the fabricator to keep the existing rolling steel door on the interior of the opening to the high traffic interior declined dock and increase their energy efficiency. The Company installed a 20-foot-wide by 14-foot-tall heavy-duty high speed rolling fabric door on the exterior of the same opening as the rolling steel door. The rolling steel door is kept open during business hours while the high speed door is closed.

With an opening speed up to 55" per second, it can open and close for traffic without impeding movement. Outside of business hours, the rolling steel door is closed for security. The high speed door has the capability to reset and repair itself in the event it is hit to minimize damage. Sensors detect if the door's path is blocked and signal the door to reverse to avoid closing on a person or object.

Additionally, DH Pace installed (2) 20-foot-wide by 14-foot-tall exterior high speed rubber doors at the facility's drive-through bays where semi-trucks are unloaded via crane. The rubber doors are constructed of 5 layers of rubber and can withstand wind loads up to 27 psf. The strength of materials and construction allow these doors to offer both security and energy efficiency with fast opening and closing. The rubber doors have an opening speed of up to 50" per second to maintain productivity levels without slowing traffic flow. Both the fabric and rubber doors were installed with operators rated for 1,000,000 cycles to ensure dependability for years.

The result is a very pleased customer who requested additional doors be replaced based on the outcome of the first installation. The facility remains secure while increasing energy efficiency and decreasing the amount of tempered air lost each day, meeting each of the customer's goals.

"As I was preparing to submit recommendations for building upgrades for our facility, I was thinking about the high speed doors that we purchased from you. I believe in all of my years here that was definitely one of the best upgrades that this plant has ever done. I would highly recommend your product anytime."

– Maintenance Supervisor of the steel fabricator

DH PACE EMERGENCY SERVICE RESPONDS AFTER HURRICANE

Industrial & Manufacturing

PROBLEM

A manufacturing facility was completely shut down due to damage following a natural disaster. Due to high winds and heavy rain, flood water and mud entered the facility and contaminated the building, including the doors. Nearly all of the facility's high speed cleanroom doors were damaged or destroyed.

SOLUTION

DH Pace quickly mobilized emergency service. Sales representatives visited the site to assess the damage and determine what work was needed. After inventorying the needs, DH Pace worked with door manufacturers to reduce lead times and get each door as fast as possible. In total, the Company removed 60 damaged doors and installed 60 fabric PVC high speed doors with stainless steel covers and components to ensure contaminants stay out of the facility's cleanrooms. Additionally, DH Pace technicians spent over 300 service hours repairing the remaining doors.

The new doors are capable of opening at up to 96" per second and feature a tight seal and self-repair abilities to reset the curtain onto the guides if it is hit and knocked off path.

The result is a happy customer who was thrilled with the Company's response and was able to meet their restoration schedule and get back to production with limited downtime to serve their customers and community. DH Pace offers 24/7/365 emergency service and is well-versed in responding to the unique needs of facilities struck by weather disasters.

24/7/365
SERVICE
CAPABILITY

FAST DOORS
REPLACEMENT

60 NEW
HIGH SPEED
DOORS



Photography Credit: Aerial Lens

VESSEL MAINTENANCE FACILITY DECREASES DOWNTIME

Industrial & Manufacturing



40' WIDE
DOORS

MEET
COASTAL
WIND-CODE

SAFETY
FEATURES

PROBLEM

A logistics hub with docks used for maintenance and repair of large ships was experiencing increasing amounts of downtime due to old and damaged doors. Because of the type of work done at the hub, the facility required extremely large openings. When the doors were not working, productivity suffered as the adjacent workspace was unusable.

SOLUTION

DH Pace presented a solution to solve the immediate problem of old and damaged doors but also address broader issues that could cause doors to age quickly or break down more often in that type of environment. The Company installed (2) 40-foot-wide by 20-foot-tall rolling steel service doors to replace the old doors.

The doors feature 18-gauge steel slats, 16" pipe barrel assembly, and sensing safety edges. They are designed to withstand the high wind loads that are common along the coast, making them less susceptible to severe damage and downtime due to wind and storms.

The new doors are fully functional, giving the customer their dock space back and decreasing their downtime, allowing for increased production and efficiency.



CUSTOMER STANDARDIZES SECURITY ACROSS MULTIPLE LOCATIONS

Distribution & Logistics

PROBLEM

A national logistics organization initiated a critical effort to overhaul security across its network of processing, distribution, and retail facilities. An internal audit of 11 diverse geographic locations exposed widespread vulnerabilities, including outdated or nonfunctional gates, locks, fencing, and CCTV systems. Several sites lacked basic perimeter security or video surveillance coverage. These deficiencies significantly increased exposure to operational disruption, theft, and safety risks.

SOLUTION

DH Pace presented a single-source solution as the supplier for all the electronic security the organization needed as well as providing assessments and consultation to select the right equipment to best secure the facilities.

The Company implemented advanced access control technology to reduce the potential for unauthorized entry. DH Pace installed more than 160 card readers across key entry points and internal doors which allowed the customer to manage and monitor access while maintaining existing workflows.

DH Pace installed intrusion detection systems with multi-sensor technologies to detect unauthorized access attempts or security breaches in real time and trigger an alarm. The systems served as a critical deterrent and strengthened the ability to proactively manage security threats.

The organization's outdated video surveillance systems were upgraded to IP-based CCTV systems with centralized monitoring capabilities. DH Pace installed more than 250 cameras, including 360°, fixed, and varifocal dome and pan/tilt/zoom models, throughout the interior and exterior of the facilities to enhance real-time surveillance and improve incident response.

DH Pace also addressed critical physical infrastructure needs, including replacing sliding gates and 8-foot-tall fencing to restore perimeter integrity.

The logistics organization mandates adherence to specific criteria for facility security. DH Pace experts have significant experience with these types of requirements and were able to design and implement a comprehensive security plan for each facility.

Employees now operate in a more secure environment and high-value assets are protected by intelligently integrated systems. The organization has dramatically improved compliance and reduced operational and reputational risks. It is so pleased with the upgraded security that projects are already underway to add over 100 additional cameras to other facility sites.

10+
LOCATIONS

250+
CAMERAS

160+
ACCESS
CONTROL
READERS



SUICIDE-DETERRENT ALARM SYSTEM ENHANCES SAFETY FOR BEHAVIORAL HEALTH SYSTEM

Healthcare

PROBLEM

To comply with regulatory standards and become proactive after a nationwide uptick in patient suicides, a health system needed to implement ligature risk deterrent measures in the inpatient behavioral health units of their facilities.

SOLUTION

DH Pace provided and installed patented proactive presence-detecting Top Door Alarm® systems at both the top and bottom of doors in the behavioral health units. Top Door Alarm is a presence detection and notification system that identifies potential self-harm when a door is used as a ligature point. As an additional precaution, the Company also installed ligature-resistant hardware and Division 10 specialties to reduce other points of contact patients could potentially use to commit self-harm. These included door handles, hinges, grab bars, handrails, and restroom equipment.

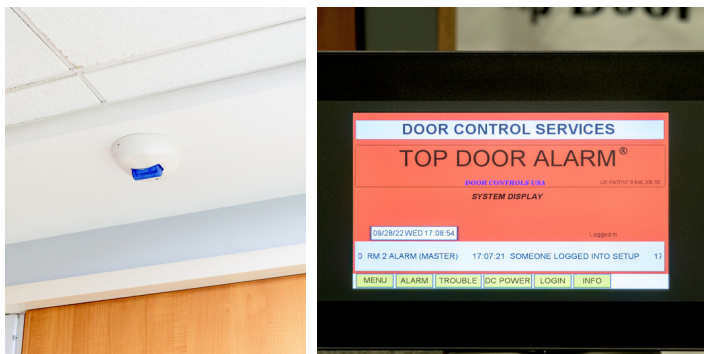
Through DH Pace installing Top Door Alarm systems, not only did the behavioral health facility become compliant with local and federal guidelines, but they also became a much safer place for patients and a more desirable place of employment.

About Top Door Alarm®:

Presence Detection Technology – Top Door Alarm is the only suicide door alarm system in the industry to offer state-of-the-art photoelectric beam detection which detects presence before pressure is ever applied to the door.

Top Door Presence Detection – Photoelectronic beams installed on the door frame face/header and top door face immediately detect the presence of a foreign object.

Bottom Door Presence Detection – Photoelectronic beams installed on the bottom door edge detect the immediate presence of a foreign object.





DHPACE[®] | *Building Safer Communities*
Everything Doors Since 1926

DHPace.com

AK LIC #CONS35075 • AZ ROC #183892 CR60 • AZ ROC #184002 CR67 • AZ ROC #296201 B-01 • CA LIC #851694 • FL LIC #CBC1266659 • FL LIC #CBC1259220 • FL LIC #ES12001628 • LA LIC #66907
MA LIC #67C • NM LIC #366998- GS06, ES03 • NM LIC #380246- GS06, ES03 • NM LIC #380247- GS06, ES03 • NM LIC #399279- ES03 • NV LIC #0071664 C-3 • NV LIC #0075881 C-14E
NV LIC #0083652 C-2D • NV LIC #0087898 C-8 • OK LIC #AC440675 • OR LIC #CCB212324 • RI LIC #3344 • TX LIC #B10455801 • WA LIC #CC DHPACHP864JC • WA LIC #EC DHPACHP802NP

Copyright © DH Pace Company Inc. DH Pace is a registered trademark of DH Pace Company, Inc. 2025 All Rights Reserved.